

Note for installing OCXO/TCXO clock module .

Please refer the OCXO/TCXO clock module installation guide first.

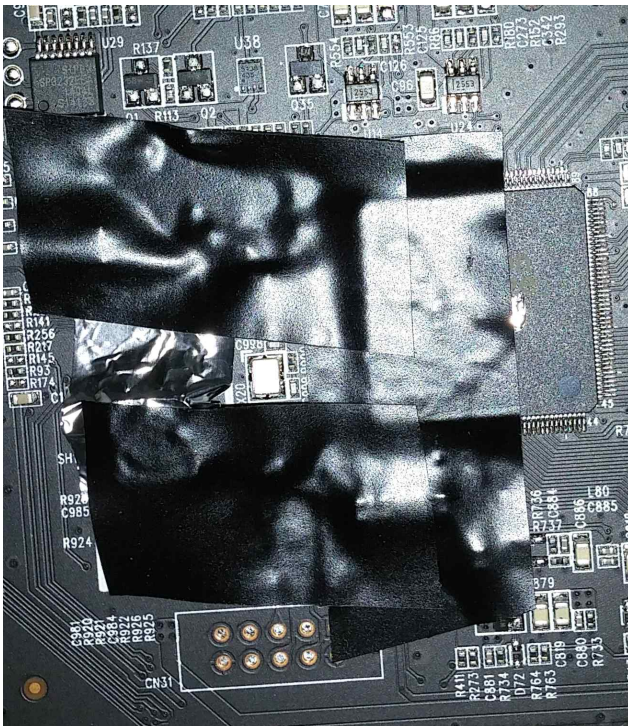
Most important thing when you install TCXO module is to take out existing clock module.



Use very good de soldering machine such as weller hot air gun (WHA 600 model) shown in the picture .

You have to take two clock. CPU clock is easy to take out. But HDMI1 clock is surrounded with many parts.

So it would be nice put aluminum foil and tapes for other parts to protect from hot air.



And set temperature as 385 degree. The CPU clock will be taken out within 5 seconds.

HDMI1 clock may be a little longer.

If you don't have right tool and skill, I can do for 80 \$.