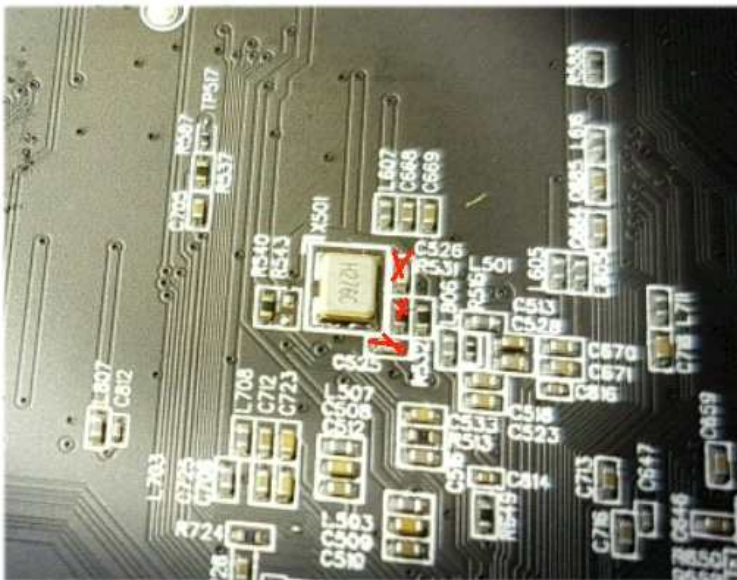
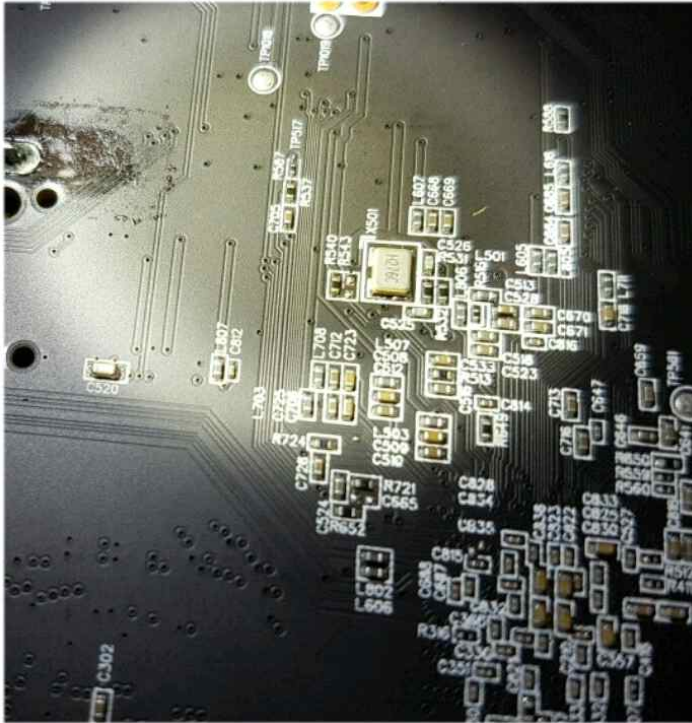
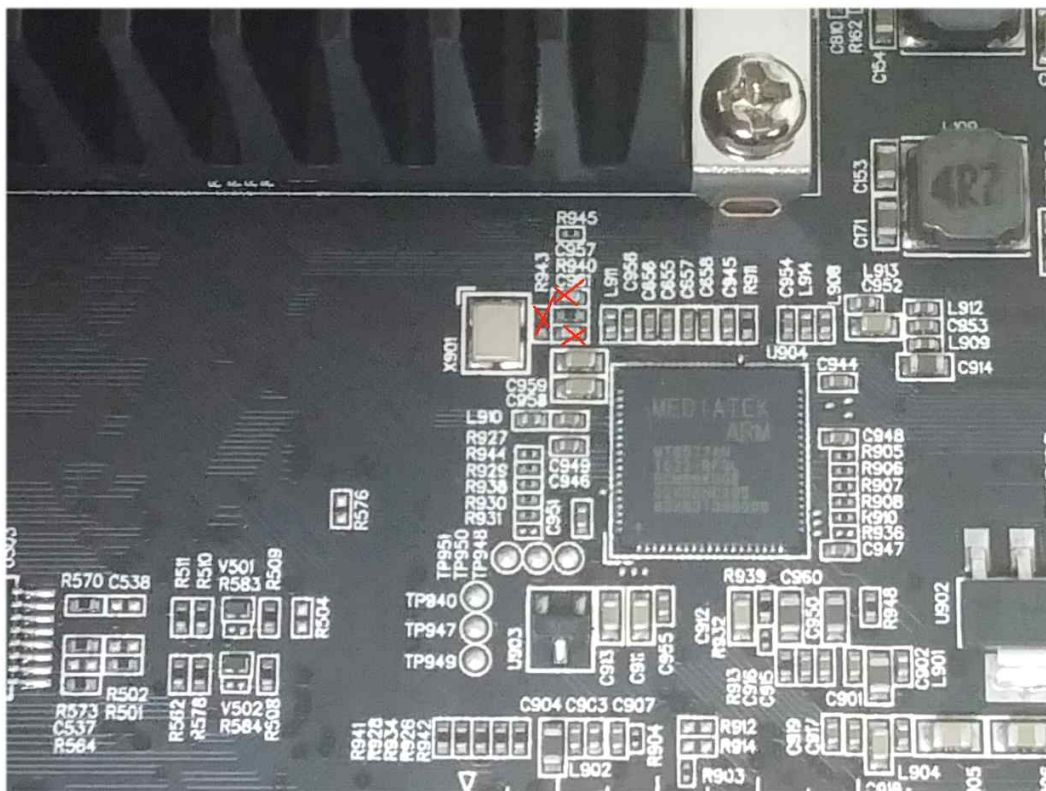


## OPPO udp 203/205 OCXO/TCXO installation guide

1. Take out 27 MHz clock and 3 other components  
C525,C526,R531



2. Take out 25 MHz clock and 3 other components  
C957,C961,R943



\* Use only good quality hot air gun such as Weller WHA 600

## WHA600KR

ESD Safe / 디지털 디스플레이 / 온도보정 기능 / 520W



AIR  
COOLING

100~  
480 °C

CALIBRATION

520W

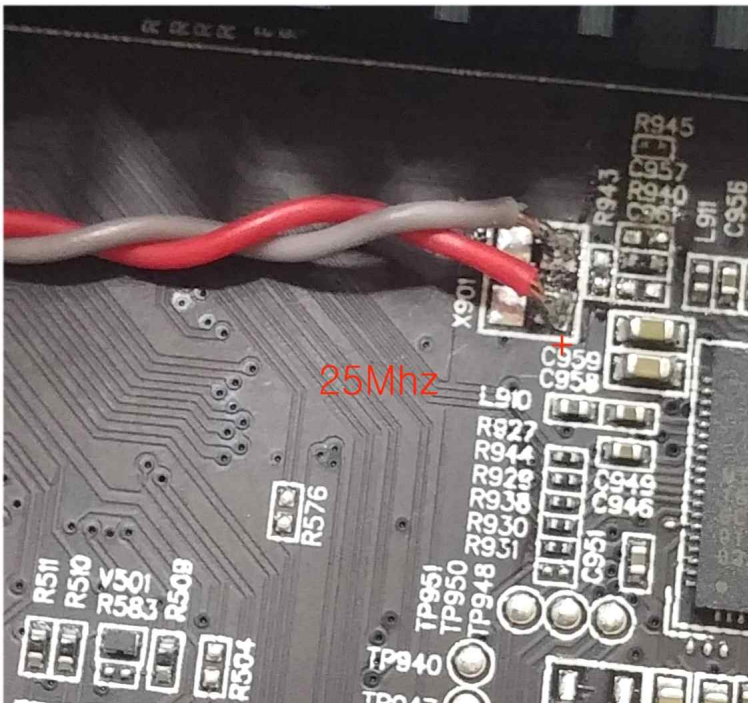
Made in China

\* 본제품은 촬영용 이미지로 실제들과는 색상, 디자인 등 약간의 차이가 있을 수 있습니다.

3. make wiring as indicated in picture .



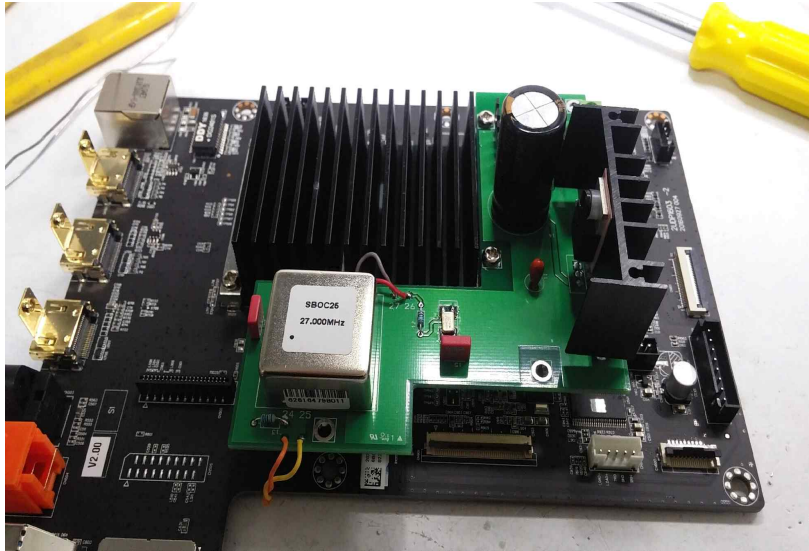
( 27 MHz)



( 25 Mhz)



4. install OCXO /TCXO clock board on the main board .



5. get the AC4.5V wire from Linear Power supply ( yellow wires )

