

LPM installation guide for OPPO UDP 205.

1. take out screw drivers in back and side panel.



2. take out upper panel.

3. take out screw drivers (8) in back panel and boards.
remove multi channel DAC board.



4. Remove side back bone panel (white). there are 4 screw drivers.

5. Remove black metal box .



6. Take out 3 wires .



7. Place Linear Power module.

8. connect 3 wires again and tighten 4 screw drivers.

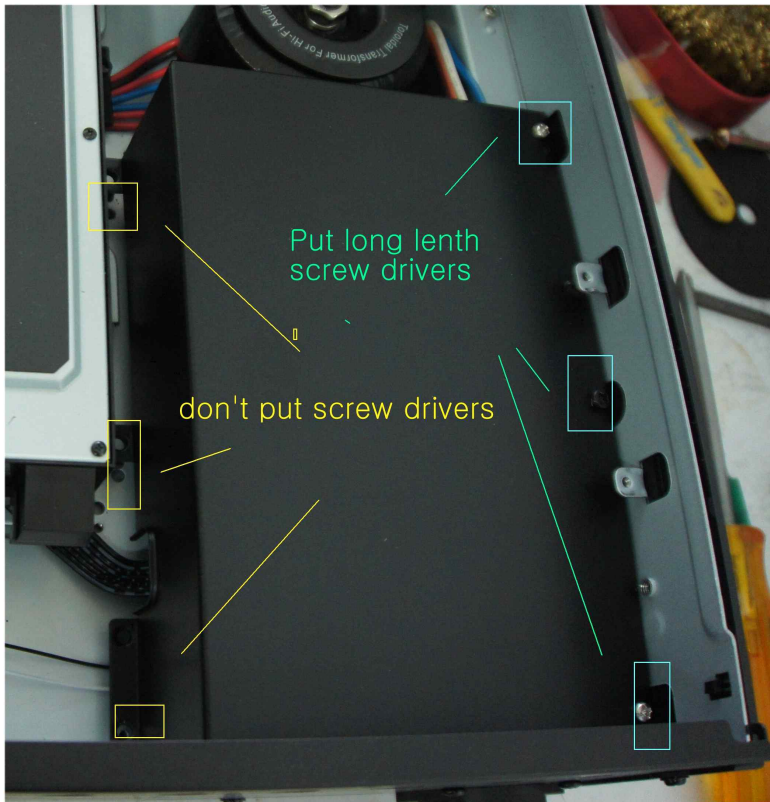


9 connect AC Inlet wires and make sure wether it turns on normally
You can see yellow LED is On now

10. turn off and plug out AC inlet wires

11. Put black box (optional)

LPM dose not produce harmful HF noise so much.
so it is not necessary to cover with black metal box.



12. place side back bone panel (white) and put the screw drivers and tighten.

13. Put multi chanel DAC board again and tighten the screw drivers

14. put upper metal cover.

Finished