

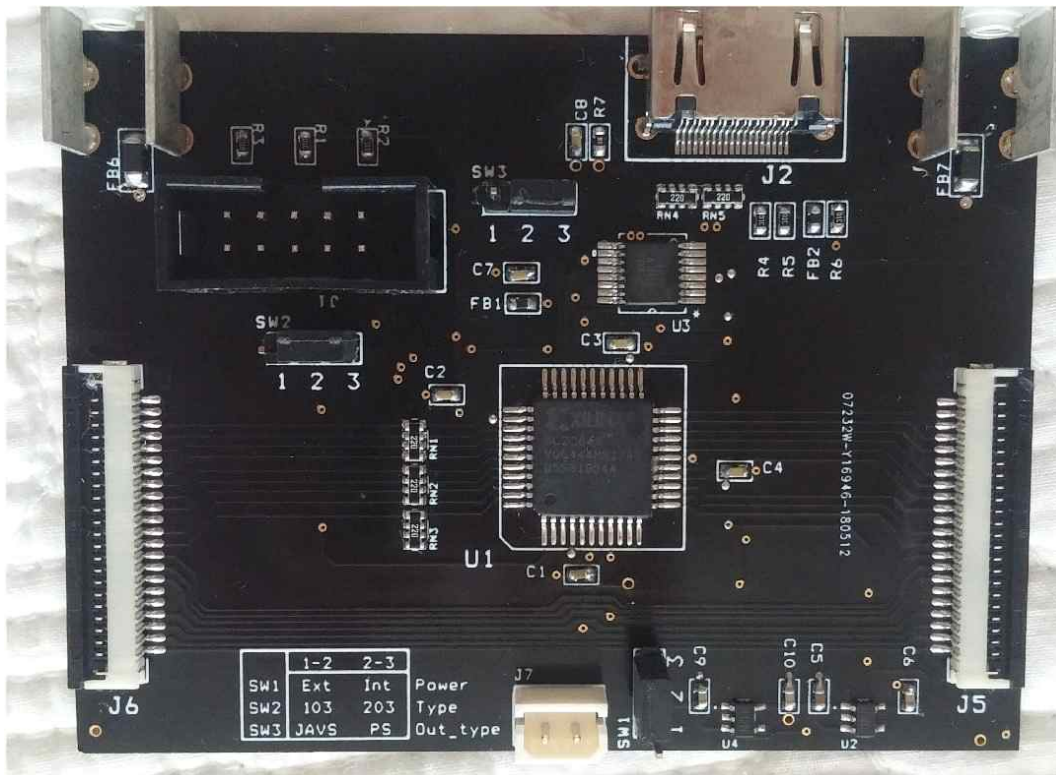
## I2S board installation guide.

1. confirm the jumper setting.

Jumper switch 1: set internal

Jumper switch 1: set to your oppo model (1-2: oppo103/103D, 2-3: OPPO 203)

Jumper switch 1: set PS (if you have trouble, try to JAVS)



2. place i2s card

I highly recommend to cut a hole as shown in below to mount I2s board.



3. connect wire from main board to J5 connector.

if you want to use existing dac board . connect with same ( extra connector ) between J6 and DAC board.

