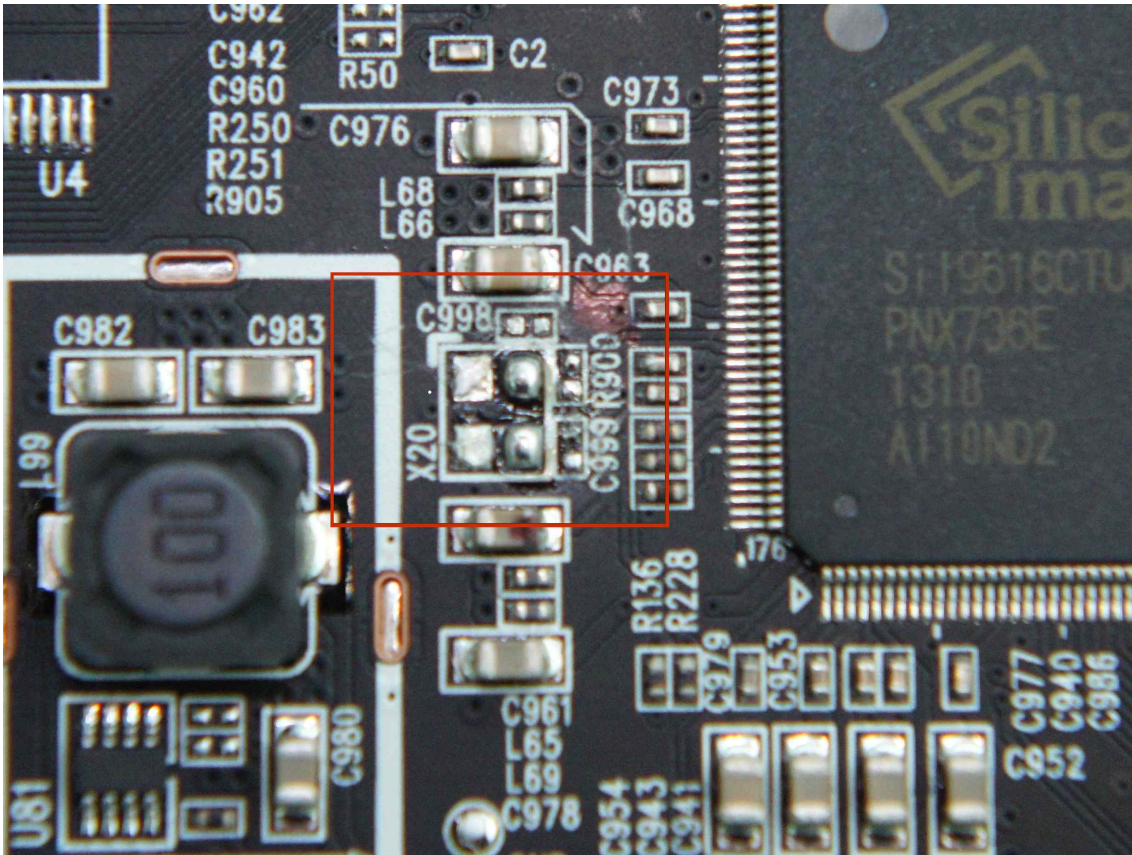


## OCXO/TCXO installation for OPPO 103D and 105D.

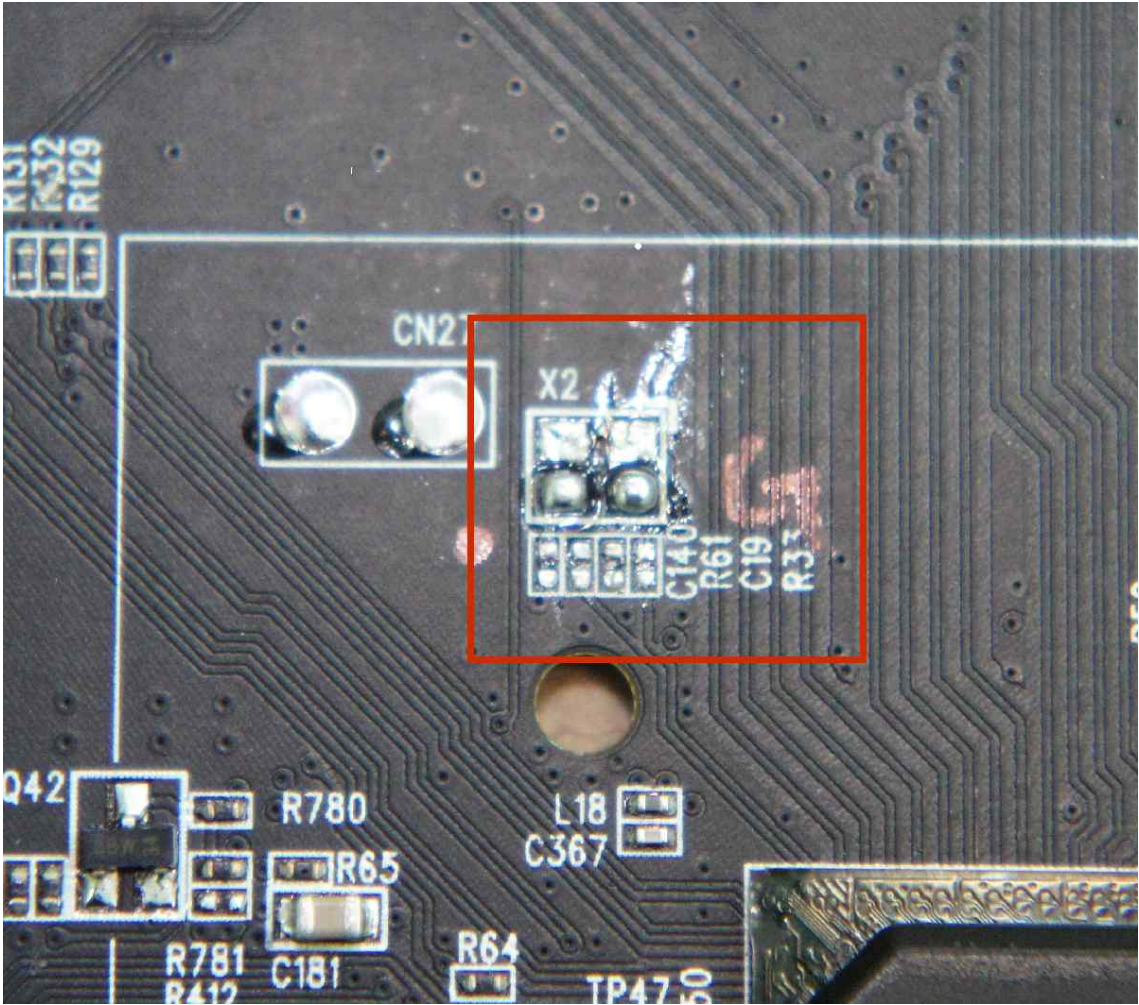
1. X20: 27 MHz : HDMI 1 and Darbee processing section.

Remove X20, C998, C999 and R900

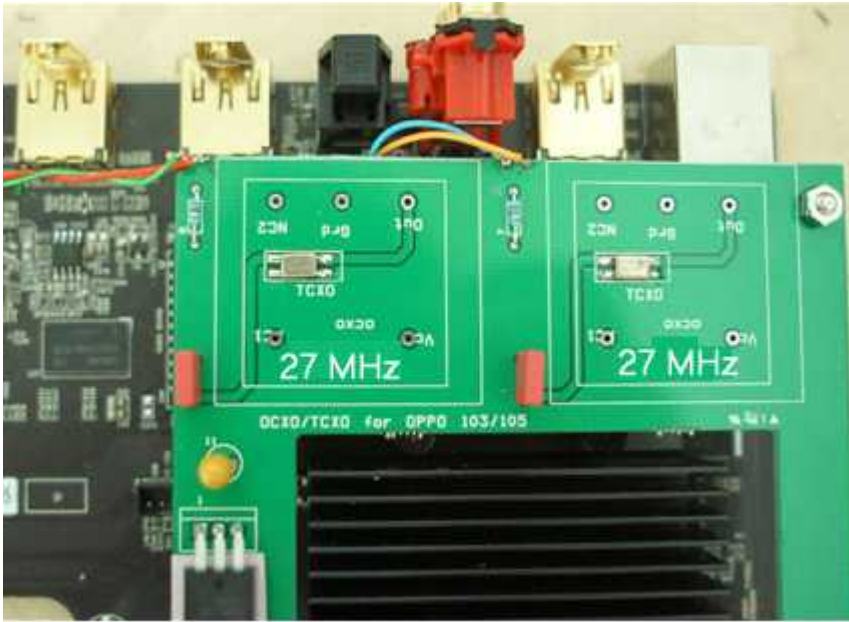


2. X2 27 MHz : CPU section.

Remove X2, C140, C19 and R61 and R33



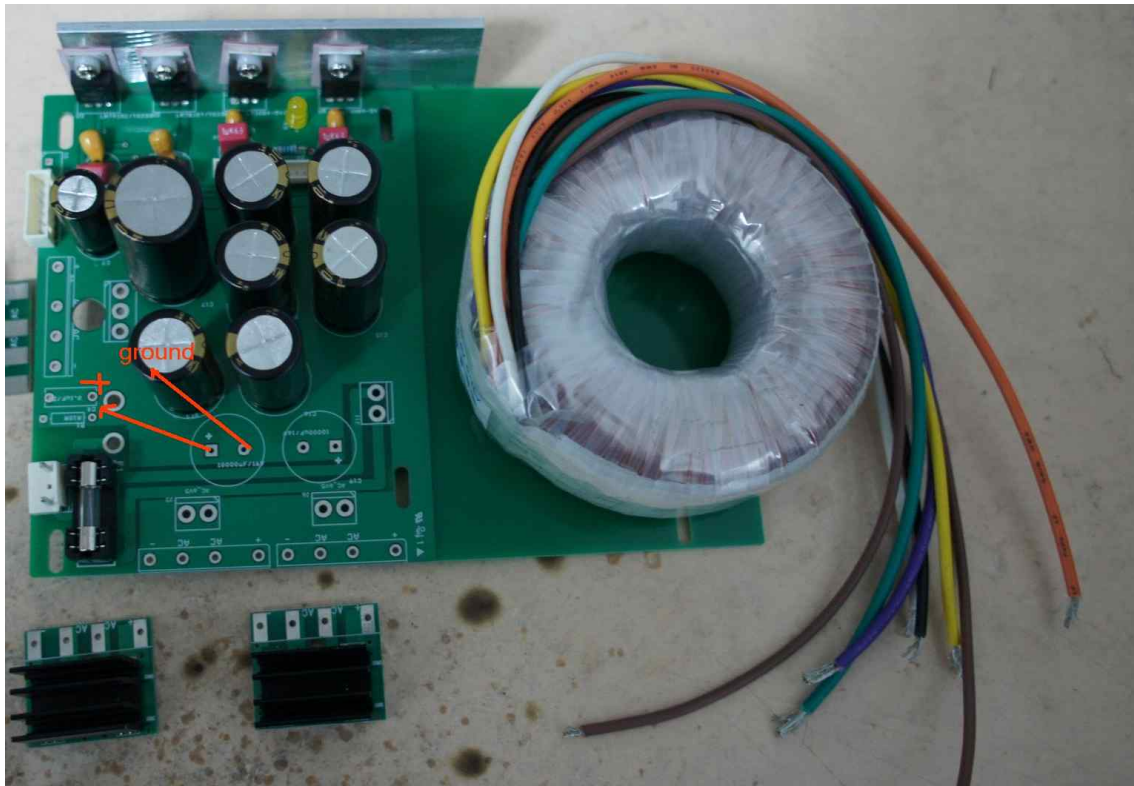




4. Get the DC power ( 6-8 V) from linear power module and connect to the input of TCXO module. the wires should be twisted as shown in picture.



If you have oppo 103D, get the power as shown in below



If you have OPPO 105D LPM, get the power as the spot shown in below.

