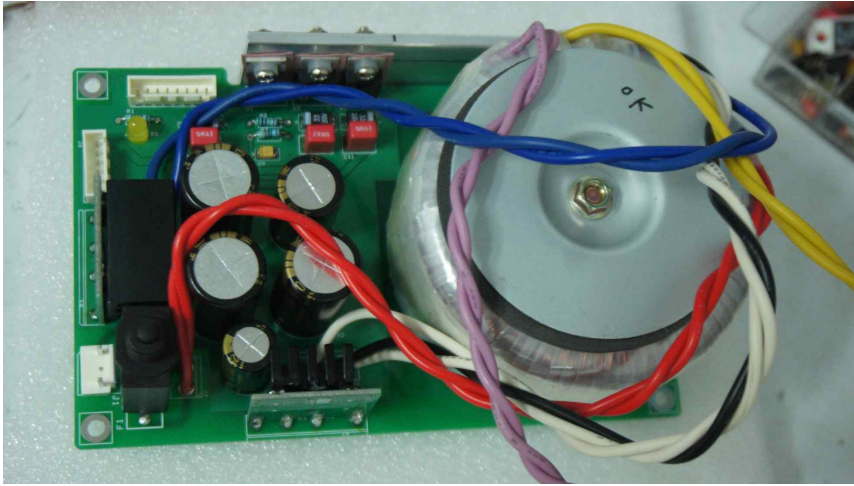


## OPPO UDP 203 LPM installation guide



1. unscrew back panel bolts (7) and side bolts (4)



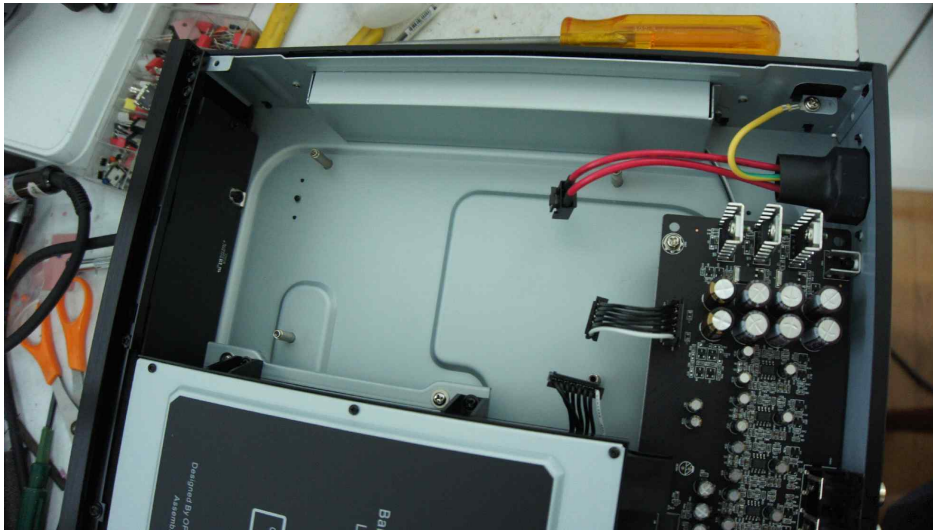
2. open cover panel



3. take out connector pins ( 3 )



5. Remove switching power supply.



6. place LPM and screw 4 bolts and reconnects connector pins

7. Test whether yellow LED is On and whether OPPO works ok.

8. place the cover and tighten bolts