

2 channel Stereo DAC Installation for OPPO 103/103D

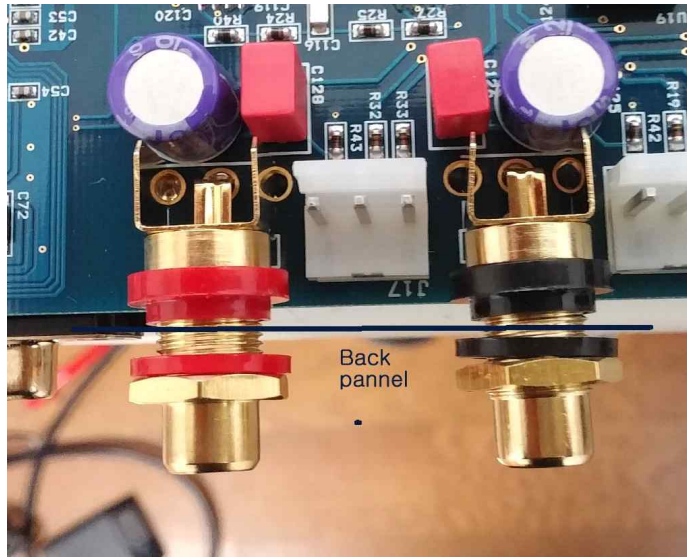
1. Open the upper case and remove all bolts in back panel.



2. Remove back panel and take out old DAC board.



3. install new board . make sure thick red and black plastic ring are located inside and thin plastic ring and gold nuts are located outside of back panel.



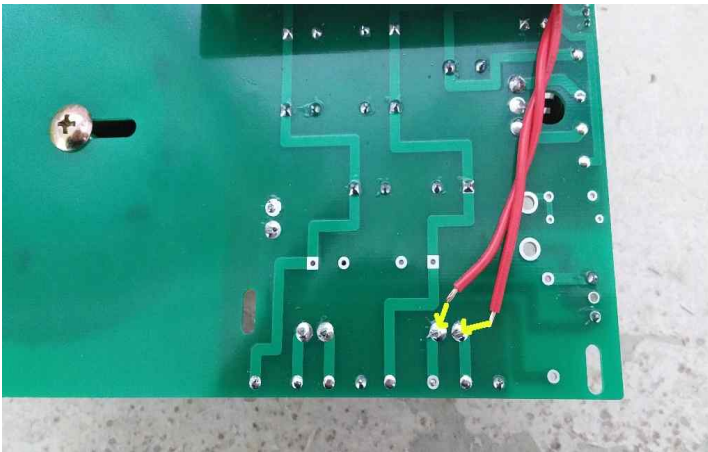
4. Insert back panel bolts and tighten the back panel.
And tighten the RCA nuts as shown in picture.



5. If you have old type LPM, take out Linear Power supply and solder red wires as shown in picture. (6.5V AC) .

If you have new LPM which has AC 6.5V outlet socket ,insert red wires to that outlet socket.

If you don't have LPM, go to step 6.

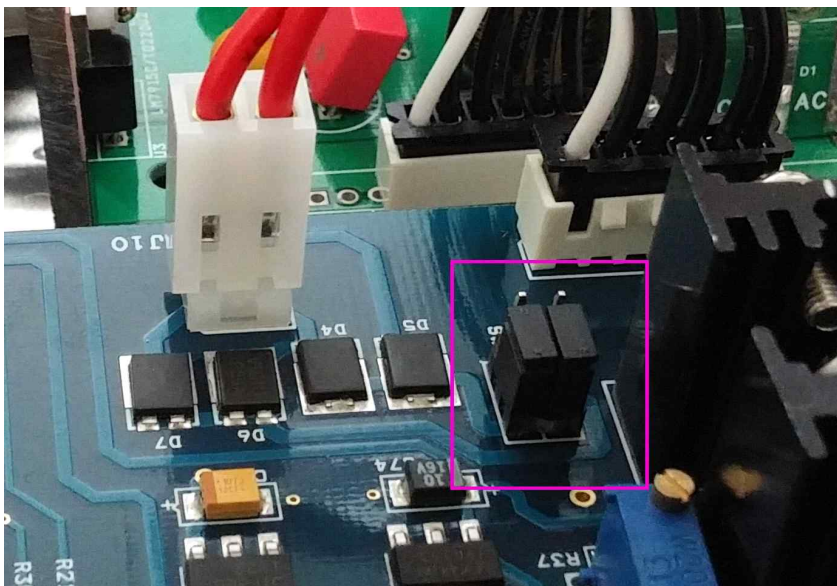


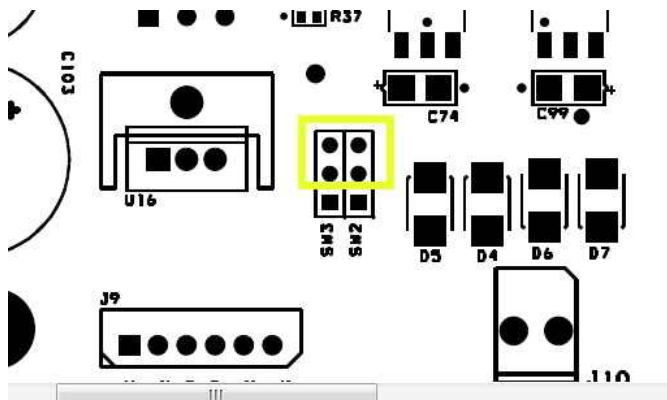
(old LPM)



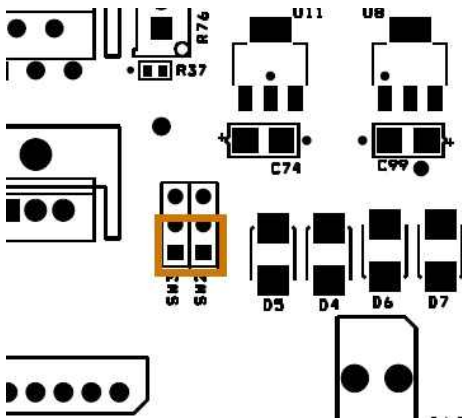
(new LPM)

6. connect existing 6 wire cable. and make sure jumper setting .





When you use power from LPM, set the jumpers in upper side.



when you use the power from 6 pin cable only, set the jumpers in lower side.

7. connect 22 pin flat cable between main board and DAC.



